

Installation: 230/24 V Transformer, TBLZ-1-46 **GOLD**

1. General

The TBLZ-46 transformer is designed for the measurement of type SELV and PELV circuits as well as galvanically separated extra-low-voltage energized items of equipment from the network.

The transformer is CE marked and meets the relevant provisions for protective transformers.

The primary side of the transformer is supplied with 230 V, 50 or 60 Hz. The secondary side has a winding sized to provide 24 V for the power connection of wired apparatuses.

Rigid plastic injection-moulded transformer in a grey enclosure made of impact-resistant, self-extinguishing thermoplastic.

Double insulated (does not need to be earthed).

Primary and secondary wiring terminals in separate wiring compartments.

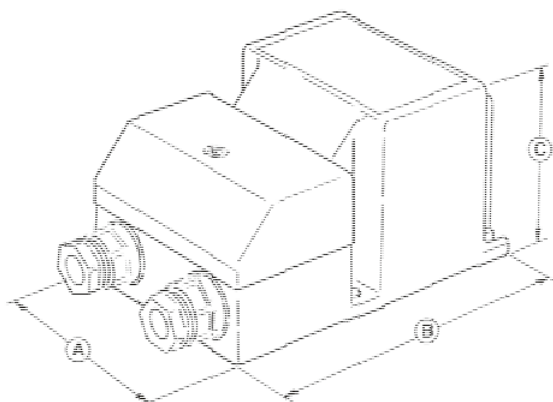


2. Installation

The transformer is designed to be mounted on a wall or in an equipment cubicle.

3. Technical data

Primary voltage	230 VAC
Secondary voltage	24 VAC
Permissible power output	60 VA
Built-in secondary glass-tube fuse	T 2.5 A
Enclosure class	IP 44



A = 73 mm
B = 117 mm
C = 65 mm