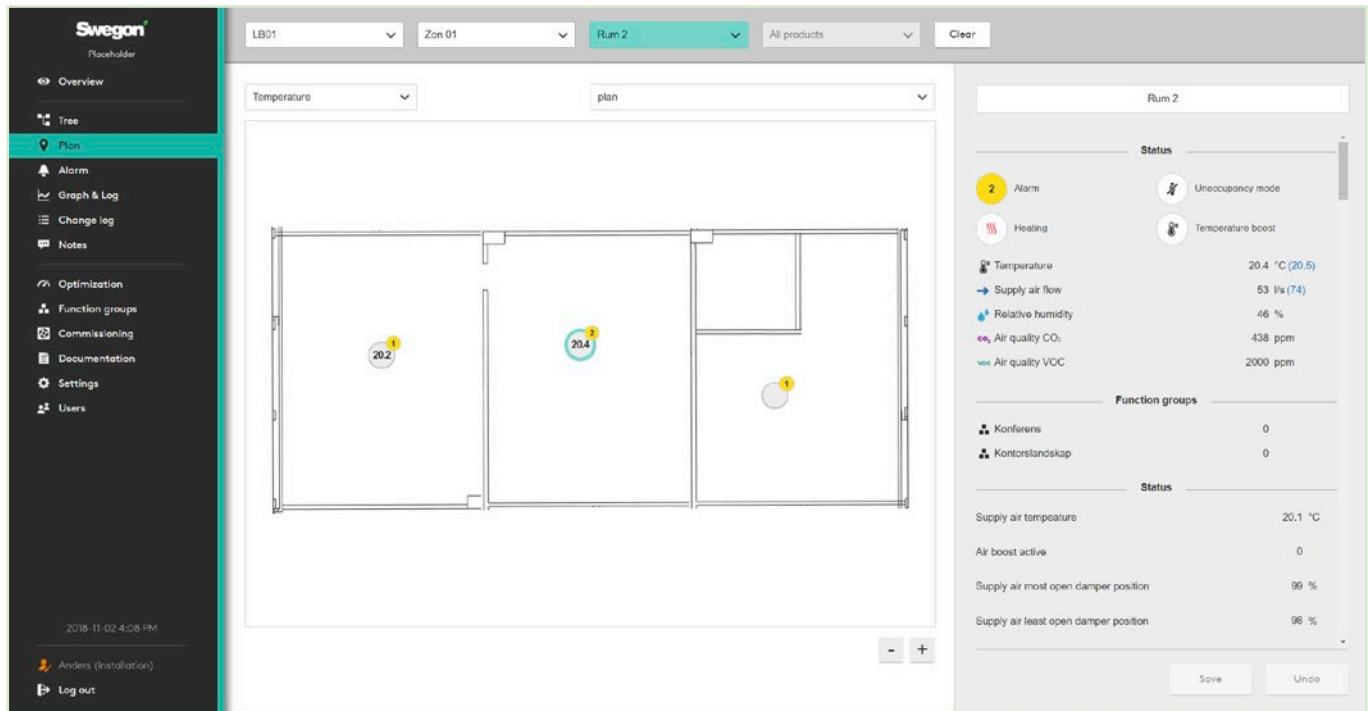




Swegon SuperWISE II BACnet PICS

BACnet Protocol Implementation Conformance Statement

SuperWISE II - Communication unit to the WISE II system



Date: November 11, 2025

Vendor Name: Swegon AB (Vendor-Identifier: 300)

Product Name: SuperWISE

Product Model Number: BOXER-6404U-A1-1010

Application Software Version: 2.7

Firmware Revision: 1.1.17.3750

BACnet Protocol Revision: 19

Product description

The SuperWISE BACnet application of Application Software Version 2.7 is implemented in the SuperWISE SW 2.30 package and provides the necessary functionality for monitoring and operating the WISE2 system. The supported Data Link Layer Options are BACnet / IP.

Swegon's WISE system for demand controlled indoor climate combines an optimal indoor climate with a minimum energy consumption. WISE is based on a unique technology that forms a safe and flexible system that also simplifies each step of the way – from system selection and planning, to installation and commissioning. This makes it possible to satisfy the increasingly greater demands from our customers - be it environmental, net operating income or increased comfort requirements.

The WISE system comprises room products for both air and waterborne climate systems, all the requisite control equipment, as well as room units and sensors. All this is linked together to form an entirety via a unique patented system for wireless communications which is self-healing and neither disturbs, nor is disturbed by, other equipment. The wireless communication is encrypted for the highest safety level, which makes it viable for sensitive environments such as hospitals and airports. Unique in terms of reliability and simplicity in installation and commissioning.

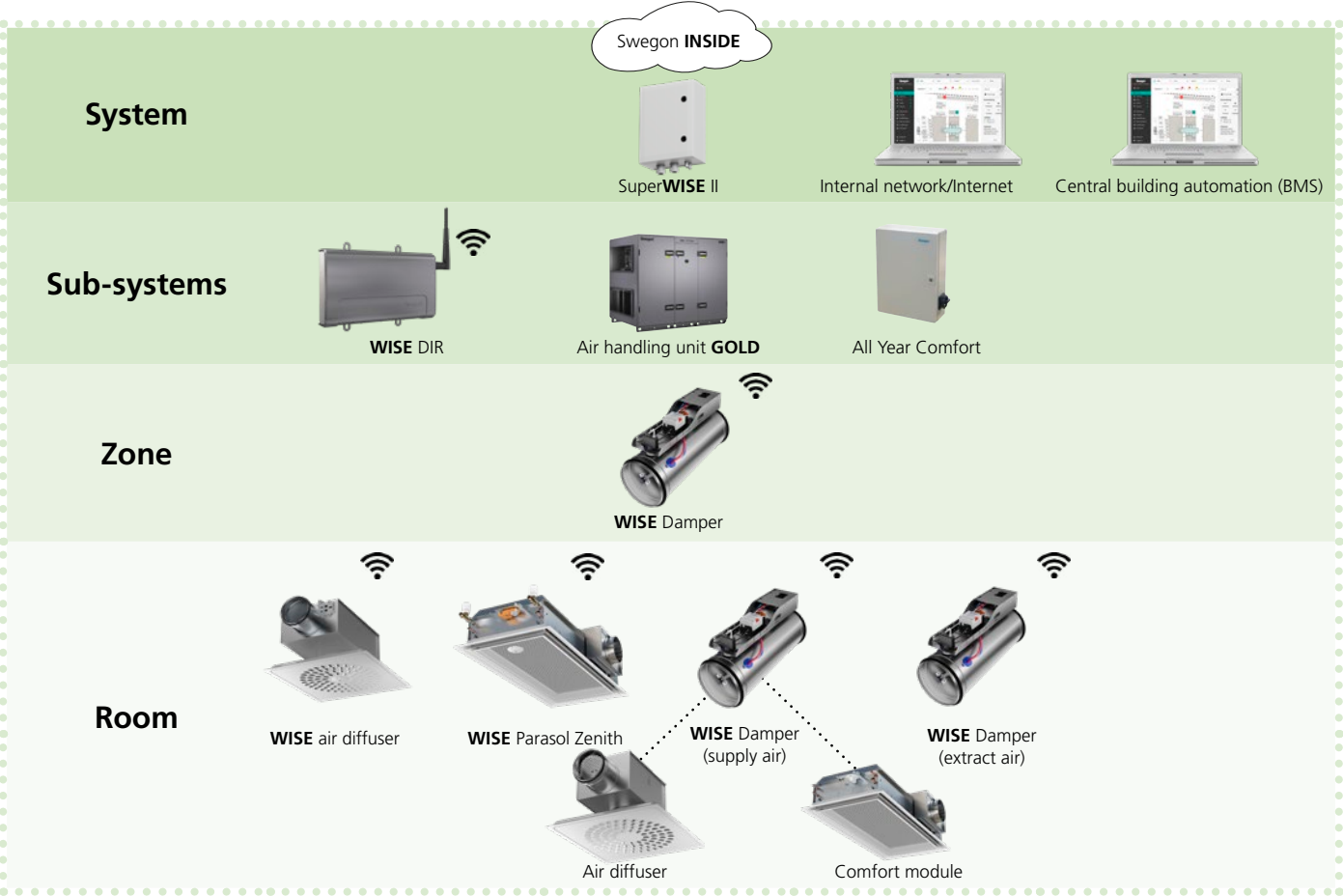
SuperWISE is the WISE system's main control unit and provides a customer interface with an overview of the entire system with up to 30 air handling units (AHUs).

Here you will find all requisite information, without it being complicated or confusing. The common platform manages multiple air handling units while there is considerable space for adaptation to each individual building. Support for virtual rooms makes it easy to assign room associations and balance the ventilation flows, which gives unbeatable flexibility during rebuilding - without any difficulties. For BACnet purposes, the SuperWISE is mapped as a B-BC main device. As such, it has the ability to act as a virtual router (VR) and manage internal BACnet virtual devices (VDs), representing the AHUs. These devices are created with the B-ASC profile.

The WISE Director is the second layer in the WISE product hierarchy. Each Director manages its separate network consisting of zone and room products, and communicates wirelessly with all products in its network. The Director synchronizes data and configurations with the SuperWISE and runs all necessary calculations and regulation loops for the products it controls. All system accessories can have functions on both zone and room levels. Directors, zone and room products are mapped as BACnet Analog, Binary and Multistate objects in the SuperWISE BACnet application.

SuperWISE, Directors and AHUs are connected by wire to each other via a permanent network.

The Swegon INSIDE cloud service allows for remote connection for monitoring and support.



BACnet Standardized Device Profiles Supported (Annex L):

- ☐ BACnet Cross-Domain Advanced Operator Workstation (B-XAWS)
- ☐ BACnet Advanced Operator Workstation (B-AWS)
- ☐ BACnet Operator Workstation (B-OWS)
- ☐ BACnet Operator Display (B-OD)
- ☐ BACnet Advanced Life Safety Workstation (B-ALSW)
- ☐ BACnet Life Safety Workstation (B-LSWS)
- ☐ BACnet Life Safety Annunciator Panel (B-LSAP)
- ☐ BACnet Advanced Access Control Workstation (B-AACWS)
- ☐ BACnet Access Control Workstation (B-ACWS)
- ☐ BACnet Access Control Security Display (B-ACSD)
- ☒ BACnet Building Controller (B-BC)
- ☐ BACnet Advanced Application Controller (B-AAC)
- ☒ BACnet Application Specific Controller (B-ASC)
- ☐ BACnet Smart Actuator (B-SA)
- ☐ BACnet Smart Sensor (B-SS)
- ☐ BACnet Advanced Life Safety Controller (B-ALSC)
- ☐ BACnet Life Safety Controller (B-LSC)
- ☐ BACnet Advanced Access Control Controller (B-AACC)
- ☐ BACnet Access Control Controller (B-ACC)
- ☐ BACnet Router (B-RTR)
- ☐ BACnet Gateway (B-GW)
- ☐ BACnet Broadcast Management Device (B-BBMD)
- ☐ BACnet Access Control Door Controller (B-ACDC)
- ☐ BACnet Access Control Credential Reader (B-ACCR)
- ☐ BACnet General (B-GENERAL)

List all BACnet Interoperability Building Blocks Supported (Annex K):

Data Sharing	DS-RP-B	Data Sharing-Read Property-B
	DS-RPM-B	Data Sharing-Read Property Multiple-B
	DS-WP-A ¹	Data Sharing-Write Property-A
	DS-WP-B	Data Sharing-Write Property-B
	DS-WPM-B	Data Sharing-Write Property Multiple-B
	DS-COV-B	Data Sharing-COV-B
	DS-COVU-B	Data Sharing-Change Of Value Unsubscribed-B
	DS-RP-A ¹	Data Sharing-Read Property-A
	DS-RPM-A ¹	Data Sharing-Read Property Multiple-A
Alarm & Event Management	AE-N-I-B	Alarm&Event-Notification Internal-B
	AE-ACK-B	Alarm&Event-Acknowledge Alarm-B
	AE-INFO-B	Alarm&Event-Event Information-B
	AE-CRL-B	Alarm&Event Management-Configurable Recipient Lists-B
Scheduling	SCHED-I-B ¹	Scheduling-Internal-B
	SCHED-E-B ¹	Scheduling-External-B
Trending	T-VMT-I-B	Trending-Viewing and Modifying Trends Internal-B
	T-ATR-B	Trending-Automated Trend Retrieval-B
Device Management	DM-DDB-A	Device Management-Dynamic Device Binding-A
	DM-DDB-B	Device Management-Dynamic Device Binding-B
	DM-DOB-B	Device Management-Dynamic Object Binding-B
	DM-DCC-B	Device Management-Dynamic Communication Control-B
	DM-TS-B ¹	Device Management-TimeSynchronization-B
	DM-UTC-B ¹	Device Management-UTCTimeSynchronization-B
	DM-RD-B	Device Management-Reinitialize Device-B
	DM-R-B	Device Management-Restart-B
	DM-LM-B	Device Management-List Manipulation-B
	DM-OCD-B	Device management-Object Creation and Deletion
	DM-BR-B ¹	Device Management-Backup and Restore-B
Network Management	NM-RC-B ¹	Network Management-Router Configuration-B
	NM-BBMD-B ¹	Network Management-BBMD Configuration-B
	NM-FDR-A ¹	Network Management-Foreign Device Registration-A

¹ BIBB is supported in the B-BC profile only.

Standard Object Types Supported:

The Create-Object and Delete-Object services are supported. Only Event-Enrollment and Trend-Log object types can be dynamically created or deleted through these BACnet service requests.

Calendar, File and Schedule objects are supported in the B-BC profile only.

“n/a” = not applicable / not implemented property.

“O” = optional property.

“R” = property is supported and readable using BACnet services.

“W” = property is supported, readable, and writable using BACnet services.

“WP” = property is supported, readable, and writable using BACnet services and also stored as persistent on the BACnet server.

Device Object Type

Property Identifier	Property Datatype	Conformance Code Standard	Conformance Code SuperWISE2
Object_Identifier	BACnetObjectIdentifier	R	R
Object_Name	CharacterString	R	R
Object_Type	BACnetObjectType	R	R
System_Status	BACnetDeviceStatus	R	R
Vendor_Name	CharacterString	R	R
Vendor_Identifier	Unsigned16	R	R
Model_Name	CharacterString	R	R
Firmware_Revision	CharacterString	R	R
Application_Software_Version	CharacterString	R	R
Location	CharacterString	O	R
Description	CharacterString	O	R
Protocol_Version	Unsigned	R	R
Protocol_Revision	Unsigned	R	R
Protocol_Services_Supported	BACnetServicesSupported	R	R
Protocol_Object_Types_Supported	BACnetObjectTypesSupported	R	R
Object_List	BACnetARRAY[N] of BACnetObjectIdentifier	R	R
Structured_Object_List	BACnetARRAY[N] of BACnetObjectIdentifier	O	R
Max_APDU_Length_Accepted	Unsigned	R	R
Segmentation_Supported	BACnetSegmentation	R	R
Max_Segments_Accepted	Unsigned	O ¹	R
VT_Classes_Supported	BACnetLIST of BACnetVTClass	O ²	n/a
Active_VT_Sessions	BACnetLIST of BACnetVTSession	O ²	n/a
Local_Time	Time	O ^{3,4,15}	R
Local_Date	Date	O ^{3,4,15}	R
UTC_Offset	INTEGER	O ⁴	R
Daylight_Savings_Status	BOOLEAN	O ⁴	R
APDU_Segment_Timeout	Unsigned	O ¹	R
APDU_Timeout	Unsigned	R	R
Number_Of_APDU_Retries	Unsigned	R	R
Time_Synchronization_Recipients	BACnetLIST of BACnetRecipient	O ⁵	n/a
Max_Master	Unsigned(0..127)	O ⁶	n/a
Max_Info_Frames	Unsigned	O ⁶	n/a
Device_Address_Binding	BACnetLIST of BACnetAddressBinding	R	R
Database_Revision	Unsigned	R	R
Configuration_Files	BACnetARRAY[N] of BACnetObjectIdentifier	O ⁷	R
Last_Restore_Time	BACnetTimeStamp	O ⁷	R
Backup_Failure_Timeout	Unsigned16	O ⁸	W
Backup_Preparation_Time	Unsigned16	O ¹⁶	R
Restore_Preparation_Time	Unsigned16	O ¹⁶	R

BACnet Protocol Implementation Conformance Statement

Property Identifier	Property Datatype	Conformance Code Standard	Conformance Code SuperWISE2
Restore_Completion_Time	Unsigned16	O ¹⁶	R
Backup_And_Restore_State	BACnetBackupState	O ⁷	R
Active_COV_Subscriptions	BACnetLIST of BACnetCOVSubscription	O ⁹	R
Last_Restart_Reason	BACnetRestartReason	O ¹³	R
Time_Of_Device_Restart	BACnetTimeStamp	O ¹³	R
Restart_Notification_Recipients	BACnetLIST of BACnetRecipient	O ¹⁷	WP
UTC_Time_Synchronization_Recipients	BACnetLIST of BACnetRecipient	O ⁵	n/a
Time_Synchronization_Interval	Unsigned	O ⁵	n/a
Align_Intervals	BOOLEAN	O ⁵	n/a
Interval_Offset	Unsigned	O ⁵	n/a
Serial_Number	CharacterString	O	R
Property_List	BACnetARRAY[N] of BACnetPropertyIdentifier	R	R
Status_Flags	BACnetStatusFlags	O ¹⁸	n/a
Event_State	BACnetEventState	O ¹⁸	n/a
Reliability	BACnetReliability	O ¹⁸	n/a
Event_Detection_Enable	BOOLEAN	O ^{18,19}	n/a
Notification_Class	Unsigned	O ^{18,19}	n/a
Event_Enable	BACnetEventTransitionBits	O ^{18,19}	n/a
Acked_Transitions	BACnetEventTransitionBits	O ^{18,19}	n/a
Notify_Type	BACnetNotifyType	O ^{18,19}	n/a
Event_Time_Stamps	BACnetARRAY[3] of BACnetTimeStamp	O ^{18,19}	n/a
Event_Message_Texts	BACnetARRAY[3] of CharacterString	O ¹⁹	n/a
Event_Message_Texts_Config	BACnetARRAY[3] of CharacterString	O ¹⁹	n/a
Reliability_Evaluation_Inhibit	BOOLEAN	O ²⁰	n/a
Active_COV_Multiple_Subscriptions	BACnetLIST of BACnetCOVMultipleSubscription	O ²¹	n/a
Tags	BACnetARRAY[N] of BACnetNameValue	O	n/a
Profile_Location	CharacterString	O	n/a
Deployed_Profile_Location	CharacterString	O ²²	n/a
Profile_Name	CharacterString	O	n/a

¹ These properties are required if, and shall be present only if, segmentation of any kind is supported.

² These properties are required if, and shall be present only if, the VT Services are supported.

³ If the device supports the execution of the TimeSynchronization service, then these properties shall be present.

⁴ If the device supports the execution of the UTCTimeSynchronization service, then these properties shall be present.

⁵ If present, this property shall be writable.

⁶ These properties are required if the device is an MS/TP master node.

⁷ These properties are required if, and shall be present only if, the device supports execution of the backup and restore procedures.

⁸ This property is required if, and shall be present only if, the device supports the backup and restore procedures. If present, this property shall be writable.

⁹ This property is required if, and shall be present only if, the device supports execution of either the SubscribeCOV or Subscribe-COVProperty service.

¹⁰ Footnote removed.

¹¹ Footnote removed.

¹² Footnote removed.

¹³ These properties are required if the device supports the restart procedure as described in Clause 19.3.

¹⁴ Footnote removed.

¹⁵ These properties shall be present if the device is capable of tracking date and time.

¹⁶ These properties are required if, and shall be present only if, the device supports execution of the backup and restore procedures as described in Clause 19.1 and cannot respond to subsequent communications within the minimum value it will accept in its APDU_Timeout property.

¹⁷ This property is required if, and shall be present only if, the device supports execution of the restart procedure as described in Clause 19.3.

¹⁸ These properties are required if the object supports intrinsic reporting.

¹⁹ These properties shall be present only if the object supports intrinsic reporting.

²⁰ If this property is present, then the Reliability property shall be present.

²¹ This property is required if, and shall be present only if, the device supports execution of the SubscribeCOVPropertyMultiple service.

²² This property is required to be writable if present.

Analog Input Object Type

Property Identifier	Property Datatype	Conformance Code Standard	Conformance Code SuperWISE2
Object_Identifier	BACnetObjectIdentifier	R	R
Object_Name	CharacterString	R	R
Object_Type	BACnetObjectType	R	R
Present_Value	REAL	R ¹	R ¹
Description	CharacterString	O	R
Device_Type	CharacterString	O	n/a
Status_Flags	BACnetStatusFlags	R	R
Event_State	BACnetEventState	R	R
Reliability	BACnetReliability	O	n/a
Out_Of_Service	BOOLEAN	R	W
Update_Interval	Unsigned	O	n/a
Units	BACnetEngineeringUnits	R	R
Min_Pres_Value	REAL	O	R
Max_Pres_Value	REAL	O	R
Resolution	REAL	O	R
COV_Increment	REAL	O ²	R
Time_Delay	Unsigned	O ^{3,5}	n/a
Notification_Class	Unsigned	O ^{3,5}	n/a
High_Limit	REAL	O ^{3,5}	n/a
Low_Limit	REAL	O ^{3,5}	n/a
Deadband	REAL	O ^{3,5}	n/a
Limit_Enable	BACnetLimitEnable	O ^{3,5}	n/a
Event_Enable	BACnetEventTransitionBits	O ^{3,5}	n/a
Acked_Transitions	BACnetEventTransitionBits	O ^{3,5}	n/a
Notify_Type	BACnetNotifyType	O ^{3,5}	n/a
Event_Time_Stamps	BACnetARRAY[3] of BACnetTimeStamp	O ^{3,5}	n/a
Event_Message_Texts	BACnetARRAY[3] of CharacterString	O ⁵	n/a
Event_Message_Texts_Config	BACnetARRAY[3] of CharacterString	O ⁵	n/a
Event_Detection_Enable	BOOLEAN	O ^{3,5}	n/a
Event_Algorithm_Inhibit_Ref	BACnetObjectPropertyReference	O ⁵	n/a
Event_Algorithm_Inhibit	BOOLEAN	O ^{5,6}	n/a
Time_Delay_Normal	Unsigned	O ⁵	n/a
Reliability_Evaluation_Inhibit	BOOLEAN	O ⁷	n/a
Property_List	BACnetARRAY[N] of BACnetPropertyIdentifier	R	R
Interface_Value	BACnetOptionalREAL	O	n/a
Fault_High_Limit	REAL	O ⁸	n/a
Fault_Low_Limit	REAL	O ⁸	n/a
Tags	BACnetARRAY[N] of BACnetNameValue	O	n/a
Profile_Location	CharacterString	O	n/a
Profile_Name	CharacterString	O	n/a

¹ This property is required to be writable when Out_Of_Service is TRUE.

² This property is required if, and shall be present only if, the object supports COV reporting.

³ These properties are required if the object supports intrinsic reporting.

⁴ Footnote removed.

⁵ These properties shall be present only if the object supports intrinsic reporting.

⁶ Event_Algorithm_Inhibit shall be present if Event_Algorithm_Inhibit_Ref is present.

⁷ If this property is present, then the Reliability property shall be present.

⁸ These properties are required if the object supports the FAULT_OUT_OF_RANGE fault algorithm.

Analog Output Object Type

Property Identifier	Property Datatype	Conformance Code Standard	Conformance Code SuperWISE2
Object_Identifier	BACnetObjectIdentifier	R	R
Object_Name	CharacterString	R	R
Object_Type	BACnetObjectType	R	R
Present_Value	REAL	W	W
Description	CharacterString	O	R
Device_Type	CharacterString	O	n/a
Status_Flags	BACnetStatusFlags	R	R
Event_State	BACnetEventState	R	R
Reliability	BACnetReliability	O	n/a
Out_Of_Service	BOOLEAN	R	W
Units	BACnetEngineeringUnits	R	R
Min_Pres_Value	REAL	O	R
Max_Pres_Value	REAL	O	R
Resolution	REAL	O	R
Priority_Array	BACnetPriorityArray	R	R
Relinquish_Default	REAL	R	R
COV_Increment	REAL	O ¹	R
Time_Delay	Unsigned	O ^{2,4}	n/a
Notification_Class	Unsigned	O ^{2,4}	n/a
High_Limit	REAL	O ^{2,4}	n/a
Low_Limit	REAL	O ^{2,4}	n/a
Deadband	REAL	O ^{2,4}	n/a
Limit_Enable	BACnetLimitEnable	O ^{2,4}	n/a
Event_Enable	BACnetEventTransitionBits	O ^{2,4}	n/a
Acked_Transitions	BACnetEventTransitionBits	O ^{2,4}	n/a
Notify_Type	BACnetNotifyType	O ^{2,4}	n/a
Event_Time_Stamps	BACnetARRAY[3] of BACnetTimeStamp	O ^{2,4}	n/a
Event_Message_Texts	BACnetARRAY[3] of CharacterString	O ⁴	n/a
Event_Message_Texts_Config	BACnetARRAY[3] of CharacterString	O ⁴	n/a
Event_Detection_Enable	BOOLEAN	O ^{2,4}	n/a
Event_Algorithm_Inhibit_Ref	BACnetObjectPropertyReference	O ⁴	n/a
Event_Algorithm_Inhibit	BOOLEAN	O ^{4,5}	n/a
Time_Delay_Normal	Unsigned	O ⁴	n/a
Reliability_Evaluation_Inhibit	BOOLEAN	O ⁶	n/a
Property_List	BACnetARRAY[N] of BACnetPropertyIdentifier	R	R
Interface_Value	BACnetOptionalREAL	O	n/a
Current_Command_Priority	BACnetOptionalUnsigned	R	R
Value_Source	BACnetValueSource	O ^{7,9,11}	n/a
Value_Source_Array	BACnetARRAY[16] of BACnetValueSource	O ^{8,10}	n/a
Last_Command_Time	BACnetTimeStamp	O ^{8,10}	n/a
Command_Time_Array	BACnetARRAY[16] of BACnetTimeStamp	O ¹⁰	n/a
Tags	BACnetARRAY[N] of BACnetNameValue	O	n/a
Profile_Location	CharacterString	O	n/a
Profile_Name	CharacterString	O	n/a

¹ This property is required if, and shall be present only if, the object supports COV reporting.

² These properties are required if the object supports intrinsic reporting.

³ Footnote removed.

⁴ These properties shall be present only if the object supports intrinsic reporting.

⁵ Event_Algorithm_Inhibit shall be present if Event_Algorithm_Inhibit_Ref is present.

BACnet Protocol Implementation Conformance Statement

⁶ If this property is present, then the Reliability property shall be present.

⁷ This property is required if the object supports the value source mechanism.

⁸ These properties are required if the object supports the value source mechanism and is commandable.

⁹ This property shall be present only if the object supports the value source mechanism.

¹⁰ These properties shall be present only if the object supports the value source mechanism and is commandable.

¹¹ This property shall be writable as described in Clause 19.5.

Analog Value Object Type

Property Identifier	Property Datatype	Conformance Code Standard	Conformance Code SuperWISE2
Object_Identifier	BACnetObjectIdentifier	R	R
Object_Name	CharacterString	R	R
Object_Type	BACnetObjectType	R	R
Present_Value	REAL	R ⁴	W
Description	CharacterString	O	R
Status_Flags	BACnetStatusFlags	R	R
Event_State	BACnetEventState	R	R
Reliability	BACnetReliability	O	n/a
Out_Of_Service	BOOLEAN	R	W
Units	BACnetEngineeringUnits	R	R
Priority_Array	BACnetPriorityArray	O ¹	R
Relinquish_Default	REAL	O ¹	R
COV_Increment	REAL	O ²	R
Time_Delay	Unsigned	O ^{3,6}	n/a
Notification_Class	Unsigned	O ^{3,6}	n/a
High_Limit	REAL	O ^{3,6}	n/a
Low_Limit	REAL	O ^{3,6}	n/a
Deadband	REAL	O ^{3,6}	n/a
Limit_Enable	BACnetLimitEnable	O ^{3,6}	n/a
Event_Enable	BACnetEventTransitionBits	O ^{3,6}	n/a
Acked_Transitions	BACnetEventTransitionBits	O ^{3,6}	n/a
Notify_Type	BACnetNotifyType	O ^{3,6}	n/a
Event_Time_Stamps	BACnetARRAY[3] of BACnetTimeStamp	O ^{3,6}	n/a
Event_Message_Texts	BACnetARRAY[3] of CharacterString	O ⁶	n/a
Event_Message_Texts_Config	BACnetARRAY[3] of CharacterString	O ⁶	n/a
Event_Detection_Enable	BOOLEAN	O ^{3,6}	n/a
Event_Algorithm_Inhibit_Ref	BACnetObjectPropertyReference	O ⁶	n/a
Event_Algorithm_Inhibit	BOOLEAN	O ^{6,7}	n/a
Time_Delay_Normal	Unsigned	O ⁶	n/a
Reliability_Evaluation_Inhibit	BOOLEAN	O ⁸	n/a
Min_Pres_Value	REAL	O	R
Max_Pres_Value	REAL	O	R
Resolution	REAL	O	R
Property_List	BACnetARRAY[N] of BACnetPropertyIdentifier	R	R
Fault_High_Limit	REAL	O ⁹	n/a
Fault_Low_Limit	REAL	O ⁹	n/a
Current_Command_Priority	BACnetOptionalUnsigned	O ¹	R
Value_Source	BACnetValueSource	O ^{10,12,14}	n/a
Value_Source_Array	BACnetARRAY[16] of BACnetValueSource	O ^{11,13}	n/a
Last_Command_Time	BACnetTimeStamp	O ^{11,13}	n/a
Command_Time_Array	BACnetARRAY[16] of BACnetTimeStamp	O ¹³	n/a
Tags	BACnetARRAY[N] of BACnetNameValue	O	n/a
Profile_Location	CharacterString	O	n/a
Profile_Name	CharacterString	O	n/a

¹ These properties are required if, and shall be present only if, Present_Value is commandable.

² This property is required if, and shall be present only if, the object supports COV reporting.

³ These properties are required if the object supports intrinsic reporting.

⁴ If Present_Value is commandable, then it is required to be writable. This property is required to be writable when Out_Of_Service is TRUE.

⁵ Footnote removed.

⁶ These properties shall be present only if the object supports intrinsic reporting.

⁷ Event_Algorithm_Inhibit shall be present if Event_Algorithm_Inhibit_Ref is present.

⁸ If this property is present, then the Reliability property shall be present.

⁹ These properties are required if the object supports the FAULT_OUT_OF_RANGE fault algorithm.

¹⁰ This property is required if the object supports the value source mechanism.

¹¹ These properties are required if the object supports the value source mechanism and is commandable.

¹² This property shall be present only if the object supports the value source mechanism.

¹³ These properties shall be present only if the object supports the value source mechanism and is commandable.

¹⁴ This property shall be writable as described in Clause 19.5.

Binary Input Object Type

Property Identifier	Property Datatype	Conformance Code Standard	Conformance Code SuperWISE2
Object_Identifier	BACnetObjectIdentifier	R	R
Object_Name	CharacterString	R	R
Object_Type	BACnetObjectType	R	R
Present_Value	BACnetBinaryPV	R ¹	R ¹
Description	CharacterString	O	R
Device_Type	CharacterString	O	n/a
Status_Flags	BACnetStatusFlags	R	R
Event_State	BACnetEventState	R	R
Reliability	BACnetReliability	O	n/a
Out_Of_Service	BOOLEAN	R	W
Polarity	BACnetPolarity	R	WP
Inactive_Text	CharacterString	O ²	n/a
Active_Text	CharacterString	O ²	n/a
Change_Of_State_Time	BACnetDateTime	O ³	n/a
Change_Of_State_Count	Unsigned	O ³	n/a
Time_Of_State_Count_Reset	BACnetDateTime	O ³	n/a
Elapsed_Active_Time	Unsigned32	O ⁴	n/a
Time_Of_Active_Time_Reset	BACnetDateTime	O ⁴	n/a
Time_Delay	Unsigned	O ^{5,7}	n/a
Notification_Class	Unsigned	O ^{5,7}	n/a
Alarm_Value	BACnetBinaryPV	O ^{5,7}	n/a
Event_Enable	BACnetEventTransitionBits	O ^{5,7}	n/a
Acked_Transitions	BACnetEventTransitionBits	O ^{5,7}	n/a
Notify_Type	BACnetNotifyType	O ^{5,7}	n/a
Event_Time_Stamps	BACnetARRAY[3] of BACnetTimeStamp	O ^{5,7}	n/a
Event_Message_Texts	BACnetARRAY[3] of CharacterString	O ⁷	n/a
Event_Message_Texts_Config	BACnetARRAY[3] of CharacterString	O ⁷	n/a
Event_Detection_Enable	BOOLEAN	O ^{5,7}	n/a
Event_Algorithm_Inhibit_Ref	BACnetObjectPropertyReference	O ⁷	n/a
Event_Algorithm_Inhibit	BOOLEAN	O ^{7,8}	n/a
Time_Delay_Normal	Unsigned	O ⁷	n/a
Reliability_Evaluation_Inhibit	BOOLEAN	O ⁹	n/a
Property_List	BACnetARRAY[N] of BACnetPropertyIdentifier	R	R
Interface_Value	BACnetOptionalBinaryPV	O	n/a
Tags	BACnetARRAY[N] of BACnetNameValue	O	n/a
Profile_Location	CharacterString	O	n/a
Profile_Name	CharacterString	O	n/a

¹ This property is required to be writable when Out_Of_Service is TRUE.

² If one of the optional properties Inactive_Text or Active_Text is present, then both of these properties shall be present.

³ If one of the optional properties Change_Of_State_Time, Change_Of_State_Count, or Time_Of_State_Count_Reset is present, then all of these properties shall be present.

⁴ If one of the optional properties Elapsed_Active_Time or Time_Of_Active_Time_Reset is present, then both of these properties shall be present.

⁵ These properties are required if the object supports intrinsic reporting.

⁶ Footnote removed.

⁷ These properties shall be present only if the object supports intrinsic reporting.

⁸ Event_Algorithm_Inhibit shall be present if Event_Algorithm_Inhibit_Ref is present.

⁹ If this property is present, then the Reliability property shall be present.

* Alarms are supported for the alarming parameters, all other Binary Input objects do not support Intrinsic Reporting.

Binary Output Object Type

Property Identifier	Property Datatype	Conformance Code Standard	Conformance Code SuperWISE2
Object_Identifier	BACnetObjectIdentifier	R	R
Object_Name	CharacterString	R	R
Object_Type	BACnetObjectType	R	R
Present_Value	BACnetBinaryPV	W	W
Description	CharacterString	O	R
Device_Type	CharacterString	O	n/a
Status_Flags	BACnetStatusFlags	R	R
Event_State	BACnetEventState	R	R
Reliability	BACnetReliability	O	n/a
Out_Of_Service	BOOLEAN	R	W
Polarity	BACnetPolarity	R	WP
Inactive_Text	CharacterString	O ¹	n/a
Active_Text	CharacterString	O ¹	n/a
Change_Of_State_Time	BACnetDateTime	O ²	n/a
Change_Of_State_Count	Unsigned	O ²	n/a
Time_Of_State_Count_Reset	BACnetDateTime	O ²	n/a
Elapsed_Active_Time	Unsigned32	O ³	n/a
Time_Of_Active_Time_Reset	BACnetDateTime	O ³	n/a
Minimum_Off_Time	Unsigned32	O	n/a
Minimum_On_Time	Unsigned32	O	n/a
Priority_Array	BACnetPriorityArray	R	R
Relinquish_Default	BACnetBinaryPV	R	R
Time_Delay	Unsigned	O ^{4,6}	n/a
Notification_Class	Unsigned	O ^{4,6}	n/a
Feedback_Value	BACnetBinaryPV	O ⁴	n/a
Event_Enable	BACnetEventTransitionBits	O ^{4,6}	n/a
Acked_Transitions	BACnetEventTransitionBits	O ^{4,6}	n/a
Notify_Type	BACnetNotifyType	O ^{4,6}	n/a
Event_Time_Stamps	BACnetARRAY[3] of BACnetTimeStamp	O ^{4,6}	n/a
Event_Message_Texts	BACnetARRAY[3] of CharacterString	O ⁶	n/a
Event_Message_Texts_Config	BACnetARRAY[3] of CharacterString	O ⁶	n/a
Event_Detection_Enable	BOOLEAN	O ^{4,6}	n/a
Event_Algorithm_Inhibit_Ref	BACnetObjectPropertyReference	O ⁶	n/a
Event_Algorithm_Inhibit	BOOLEAN	O ^{6,7}	n/a
Time_Delay_Normal	Unsigned	O ⁶	n/a
Reliability_Evaluation_Inhibit	BOOLEAN	O ⁸	n/a
Property_List	BACnetARRAY[N] of BACnetPropertyIdentifier	R	R
Interface_Value	BACnetOptionalBinaryPV	O	n/a
Current_Command_Priority	BACnetOptionalUnsigned	R	R
Value_Source	BACnetValueSource	O ^{9,11,13}	n/a
Value_Source_Array	BACnetARRAY[16] of BACnetValueSource	O ^{10,12}	n/a
Last_Command_Time	BACnetTimeStamp	O ^{10,12}	n/a
Command_Time_Array	BACnetARRAY[16] of BACnetTimeStamp	O ¹²	n/a
Tags	BACnetARRAY[N] of BACnetNameValue	O	n/a
Profile_Location	CharacterString	O	n/a
Profile_Name	CharacterString	O	n/a

¹ If one of the optional properties Inactive_Text or Active_Text is present, then both of these properties shall be present.

² If one of the optional properties Change_Of_State_Time, Change_Of_State_Count, or Time_Of_State_Count_Reset is present, then all of these properties shall be present.

³ If one of the optional properties Elapsed_Active_Time or Time_Of_Active_Time_Reset is present, then both of these properties shall be present.

⁴ These properties are required if the object supports intrinsic reporting.

⁵ Footnote removed.

⁶ These properties shall be present only if the object supports intrinsic reporting.

⁷ Event_Algorithm_Inhibit shall be present if Event_Algorithm_Inhibit_Ref is present.

⁸ If this property is present, then the Reliability property shall be present.

⁹ This property is required if the object supports the value source mechanism.

¹⁰ These properties are required if the object supports the value source mechanism and is commandable.

¹¹ This property shall be present only if the object supports the value source mechanism.

¹² These properties shall be present only if the object supports the value source mechanism and is commandable.

¹³ This property shall be writable as described in Clause 19.5.

Binary Value Object Type

Property Identifier	Property Datatype	Conformance Code Standard	Conformance Code SuperWISE2
Object_Identifier	BACnetObjectIdentifier	R	R
Object_Name	CharacterString	R	R
Object_Type	BACnetObjectType	R	R
Present_Value	BACnetBinaryPV	R ¹	W*
Description	CharacterString	O	R
Status_Flags	BACnetStatusFlags	R	R
Event_State	BACnetEventState	R	R
Reliability	BACnetReliability	O	n/a
Out_Of_Service	BOOLEAN	R	W
Inactive_Text	CharacterString	O ²	n/a
Active_Text	CharacterString	O ²	n/a
Change_Of_State_Time	BACnetDateTime	O ³	n/a
Change_Of_State_Count	Unsigned32	O ³	n/a
Time_Of_State_Count_Reset	BACnetDateTime	O ³	n/a
Elapsed_Active_Time	Unsigned32	O ⁴	n/a
Time_Of_Active_Time_Reset	BACnetDateTime	O ⁴	n/a
Minimum_Off_Time	Unsigned32	O	n/a
Minimum_On_Time	Unsigned32	O	n/a
Priority_Array	BACnetPriorityArray	O ⁵	R [#]
Relinquish_Default	BACnetBinaryPV	O ⁵	R [#]
Time_Delay	Unsigned	O ^{6,8}	WP ^{\$}
Notification_Class	Unsigned	O ^{6,8}	WP ^{\$}
Alarm_Value	BACnetBinaryPV	O ^{6,8}	WP ^{\$}
Event_Enable	BACnetEventTransitionBits	O ^{6,8}	WP ^{\$}
Acked_Transitions	BACnetEventTransitionBits	O ^{6,8}	R ^{\$}
Notify_Type	BACnetNotifyType	O ^{6,8}	WP ^{\$}
Event_Time_Stamps	BACnetARRAY[3] of BACnetTimeStamp	O ^{6,8}	R ^{\$}
Event_Message_Texts	BACnetARRAY[3] of CharacterString	O ⁸	n/a
Event_Message_Texts_Config	BACnetARRAY[3] of CharacterString	O ⁸	n/a
Event_Detection_Enable	BOOLEAN	O ^{6,8}	WP ^{\$}
Event_Algorithm_Inhibit_Ref	BACnetObjectPropertyReference	O ⁸	n/a
Event_Algorithm_Inhibit	BOOLEAN	O ^{8,9}	n/a
Time_Delay_Normal	Unsigned	O ⁸	n/a
Reliability_Evaluation_Inhibit	BOOLEAN	O ¹⁰	n/a
Property_List	BACnetARRAY[N] of BACnetPropertyIdentifier	R	R
Current_Command_Priority	BACnetOptionalUnsigned	O ⁵	R
Value_Source	BACnetValueSource	O ^{11,13,15}	n/a
Value_Source_Array	BACnetARRAY[16] of BACnetValueSource	O ^{12,14}	n/a
Last_Command_Time	BACnetTimeStamp	O ^{12,14}	n/a
Command_Time_Array	BACnetARRAY[16] of BACnetTimeStamp	O ¹⁴	n/a
Tags	BACnetARRAY[N] of BACnetNameValue	O	n/a
Profile_Location	CharacterString	O	n/a
Profile_Name	CharacterString	O	n/a

¹ If Present_Value is commandable, then it is required to be writable. This property is required to be writable when Out_Of_Service is TRUE.

² If one of the optional properties Inactive_Text or Active_Text is present, then both of these properties shall be present.

³ If one of the optional properties Change_Of_State_Time, Change_Of_State_Count, or Time_Of_State_Count_Reset is present, then all of these properties shall be present.

⁴ If one of the optional properties Elapsed_Active_Time or Time_Of_Active_Time_Reset is present, then both of these properties shall be present.

⁵ These properties are required if, and shall be present only if, Present_Value is commandable.

⁶ These properties are required if the object supports intrinsic reporting.

⁷ Footnote removed.

⁸ These properties shall be present only if the object supports intrinsic reporting.

⁹ Event_Algorithm_Inhibit shall be present if Event_Algorithm_Inhibit_Ref is present.

¹⁰ If this property is present, then the Reliability property shall be present.

¹¹ This property is required if the object supports the value source mechanism.

¹² These properties are required if the object supports the value source mechanism and is commandable.

¹³ This property shall be present only if the object supports the value source mechanism.

¹⁴ These properties shall be present only if the object supports the value source mechanism and is commandable.

¹⁵ This property shall be writable as described in Clause 19.5.

*Present-Value is writable only if respective instance of object does not support intrinsic alarm-related properties.

#Properties are present only if respective instance of object does not support intrinsic alarm-related properties.

\$Properties are present only if respective instance of object supports intrinsic alarms.

Calendar Object Type

Property Identifier	Property Datatype	Conformance Code Standard	Conformance Code SuperWISE2
Object_Identifier	BACnetObjectIdentifier	R	R
Object_Name	CharacterString	R	R
Object_Type	BACnetObjectType	R	R
Description	CharacterString	O	R
Present_Value	BOOLEAN	R	R
Date_List	BACnetLIST of BACnetCalendarEntry	R	WP ¹
Property_List	BACnetARRAY[N] of BACnetPropertyIdentifier	R	R
Tags	BACnetARRAY[N] of BACnetNameValue	O	n/a
Profile_Location	CharacterString	O	n/a
Profile_Name	CharacterString	O	n/a

¹ DateList: max. 10 entries (can be changed from configuration tool)

Multistate Input Object Type

Property Identifier	Property Datatype	Conformance Code Standard	Conformance Code SuperWISE2
Object_Identifier	BACnetObjectIdentifier	R	R
Object_Name	CharacterString	R	R
Object_Type	BACnetObjectType	R	R
Present_Value	Unsigned	R ¹	R ¹
Description	CharacterString	O	R
Device_Type	CharacterString	O	n/a
Status_Flags	BACnetStatusFlags	R	R
Event_State	BACnetEventState	R	R
Reliability	BACnetReliability	O	n/a
Out_Of_Service	BOOLEAN	R	W
Number_Of_States	Unsigned	R	R
State_Text	BACnetARRAY[N] of CharacterString	O	R
Time_Delay	Unsigned	O ^{3,5}	n/a
Notification_Class	Unsigned	O ^{3,5}	n/a
Alarm_Values	BACnetLIST of Unsigned	O ^{3,5}	n/a
Fault_Values	BACnetLIST of Unsigned	O ⁷	n/a
Event_Enable	BACnetEventTransitionBits	O ^{3,5}	n/a
Acked_Transitions	BACnetEventTransitionBits	O ^{3,5}	n/a
Notify_Type	BACnetNotifyType	O ^{3,5}	n/a
Event_Time_Stamps	BACnetARRAY[3] of BACnetTimeStamp	O ^{3,5}	n/a
Event_Message_Texts	BACnetARRAY[3] of CharacterString	O ⁵	n/a
Event_Message_Texts_Config	BACnetARRAY[3] of CharacterString	O ⁵	n/a
Event_Detection_Enable	BOOLEAN	O ^{3,5}	n/a
Event_Algorithm_Inhibit_Ref	BACnetObjectPropertyReference	O ⁵	n/a
Event_Algorithm_Inhibit	BOOLEAN	O ^{5,6}	n/a
Time_Delay_Normal	Unsigned	O ⁵	n/a
Reliability_Evaluation_Inhibit	BOOLEAN	O ⁷	n/a
Property_List	BACnetARRAY[N] of BACnetPropertyIdentifier	R	R
Interface_Value	BACnetOptionalUnsigned	O	n/a
Tags	BACnetARRAY[N] of BACnetNameValue	O	n/a
Profile_Location	CharacterString	O	n/a
Profile_Name	CharacterString	O	n/a

¹ This property is required to be writable when Out_Of_Service is TRUE.

² Footnote removed.

³ These properties are required if the object supports intrinsic reporting.

⁴ Footnote removed.

⁵ These properties shall be present only if the object supports intrinsic reporting.

⁶ Event_Algorithm_Inhibit shall be present if Event_Algorithm_Inhibit_Ref is present.

⁷ If this property is present, then the Reliability property shall be present.

Multistate Output Object Type

Property Identifier	Property Datatype	Conformance Code Standard	Conformance Code SuperWISE2
Object_Identifier	BACnetObjectIdentifier	R	R
Object_Name	CharacterString	R	R
Object_Type	BACnetObjectType	R	R
Present_Value	Unsigned	W	W
Description	CharacterString	O	R
Device_Type	CharacterString	O	n/a
Status_Flags	BACnetStatusFlags	R	R
Event_State	BACnetEventState	R	R
Reliability	BACnetReliability	O	n/a
Out_Of_Service	BOOLEAN	R	W
Number_Of_States	Unsigned	R	R
State_Text	BACnetARRAY[N] of CharacterString	O	R
Priority_Array	BACnetPriorityArray	R	R
Relinquish_Default	Unsigned	R	R
Time_Delay	Unsigned	O ^{1,3}	n/a
Notification_Class	Unsigned	O ^{1,3}	n/a
Feedback_Value	Unsigned	O ¹	n/a
Event_Enable	BACnetEventTransitionBits	O ^{1,3}	n/a
Acked_Transitions	BACnetEventTransitionBits	O ^{1,3}	n/a
Notify_Type	BACnetNotifyType	O ^{1,3}	n/a
Event_Time_Stamps	BACnetARRAY[3] of BACnetTimeStamp	O ^{1,3}	n/a
Event_Message_Texts	BACnetARRAY[3] of CharacterString	O ³	n/a
Event_Message_Texts_Config	BACnetARRAY[3] of CharacterString	O ³	n/a
Event_Detection_Enable	BOOLEAN	O ^{1,3}	n/a
Event_Algorithm_Inhibit_Ref	BACnetObjectPropertyReference	O ³	n/a
Event_Algorithm_Inhibit	BOOLEAN	O ^{3,4}	n/a
Time_Delay_Normal	Unsigned	O ³	n/a
Reliability_Evaluation_Inhibit	BOOLEAN	O ⁵	n/a
Property_List	BACnetARRAY[N] of BACnetPropertyIdentifier	R	R
Interface_Value	BACnetOptionalUnsigned	O	n/a
Current_Command_Priority	BACnetOptionalUnsigned	R	R
Value_Source	BACnetValueSource	O ^{6,8,10}	n/a
Value_Source_Array	BACnetARRAY[16] of BACnetValueSource	O ^{7,9}	n/a
Last_Command_Time	BACnetTimeStamp	O ^{7,9}	n/a
Command_Time_Array	BACnetARRAY[16] of BACnetTimeStamp	O ⁹	n/a
Tags	BACnetARRAY[N] of BACnetNameValue	O	n/a
Profile_Location	CharacterString	O	n/a
Profile_Name	CharacterString	O	n/a

¹ These properties are required if the object supports intrinsic reporting.

² Footnote removed.

³ These properties shall be present only if the object supports intrinsic reporting.

⁴ Event_Algorithm_Inhibit shall be present if Event_Algorithm_Inhibit_Ref is present.

⁵ If this property is present, then the Reliability property shall be present.

⁶ This property is required if the object supports the value source mechanism.

⁷ These properties are required if the object supports the value source mechanism and is commandable.

⁸ This property shall be present only if the object supports the value source mechanism.

⁹ These properties shall be present only if the object supports the value source mechanism and is commandable.

¹⁰ This property shall be writable as described in Clause 19.5.

Multistate Value Object Type

Property Identifier	Property Datatype	Conformance Code Standard	Conformance Code SuperWISE2
Object_Identifier	BACnetObjectIdentifier	R	R
Object_Name	CharacterString	R	R
Object_Type	BACnetObjectType	R	R
Present_Value	Unsigned	R ¹	W
Description	CharacterString	O	R
Status_Flags	BACnetStatusFlags	R	R
Event_State	BACnetEventState	R	R
Reliability	BACnetReliability	O	n/a
Out_Of_Service	BOOLEAN	R	W
Number_Of_States	Unsigned	R	R
State_Text	BACnetARRAY[N] of CharacterString	O	R
Priority_Array	BACnetPriorityArray	O ³	R
Relinquish_Default	Unsigned	O ³	R
Time_Delay	Unsigned	O ^{4,6}	n/a
Notification_Class	Unsigned	O ^{4,6}	n/a
Alarm_Values	BACnetLIST of Unsigned	O ^{4,6}	n/a
Fault_Values	BACnetLIST of Unsigned	O ⁸	n/a
Event_Enable	BACnetEventTransitionBits	O ^{4,6}	n/a
Acked_Transitions	BACnetEventTransitionBits	O ^{4,6}	n/a
Notify_Type	BACnetNotifyType	O ^{4,6}	n/a
Event_Time_Stamps	BACnetARRAY[3] of BACnetTimeStamp	O ^{4,6}	n/a
Event_Message_Texts	BACnetARRAY[3] of CharacterString	O ⁶	n/a
Event_Message_Texts_Config	BACnetARRAY[3] of CharacterString	O ⁶	n/a
Event_Detection_Enable	BOOLEAN	O ^{4,6}	n/a
Event_Algorithm_Inhibit_Ref	BACnetObjectPropertyReference	O ⁶	n/a
Event_Algorithm_Inhibit	BOOLEAN	O ^{6,7}	n/a
Time_Delay_Normal	Unsigned	O ⁶	n/a
Reliability_Evaluation_Inhibit	BOOLEAN	O ⁸	n/a
Property_List	BACnetARRAY[N] of BACnetPropertyIdentifier	R	R
Current_Command_Priority	BACnetOptionalUnsigned	O ³	R
Value_Source	BACnetValueSource	O ^{9,11,13}	n/a
Value_Source_Array	BACnetARRAY[16] of BACnetValueSource	O ^{10,12}	n/a
Last_Command_Time	BACnetTimeStamp	O ^{10,12}	n/a
Command_Time_Array	BACnetARRAY[16] of BACnetTimeStamp	O ¹²	n/a
Tags	BACnetARRAY[N] of BACnetNameValue	O	n/a
Profile_Location	CharacterString	O	n/a
Profile_Name	CharacterString	O	n/a

¹ If Present_Value is commandable, then it is required to also be writable. This property is required to be writable when Out_Of_Service is TRUE.

² Footnote removed.

³ These properties are required if, and shall be present only if, Present_Value is commandable.

⁴ These properties are required if the object supports intrinsic reporting.

⁵ Footnote removed.

⁶ These properties shall be present only if the object supports intrinsic reporting.

⁷ Event_Algorithm_Inhibit shall be present if Event_Algorithm_Inhibit_Ref is present.

⁸ If this property is present, then the Reliability property shall be present.

⁹ This property is required if the object supports the value source mechanism.

¹⁰ These properties are required if the object supports the value source mechanism and is commandable.

¹¹ This property shall be present only if the object supports the value source mechanism.

¹² These properties shall be present only if the object supports the value source mechanism and is commandable.

¹³ This property shall be writable as described in Clause 19.5.

Notification Class Object Type

Property Identifier	Property Datatype	Conformance Code Standard	Conformance Code SuperWISE2
Object_Identifier	BACnetObjectIdentifier	R	R
Object_Name	CharacterString	R	R
Object_Type	BACnetObjectType	R	R
Description	CharacterString	O	R
Notification_Class	Unsigned	R	R
Priority	BACnetARRAY[3] of Unsigned	R	WP
Ack_Required	BACnetEventTransitionBits	R	WP
Recipient_List	BACnetLIST of BACnetDestination	R	WP*
Property_List	BACnetARRAY[N] of BACnetPropertyIdentifier	R	R
Status_Flags	BACnetStatusFlags	O ¹	n/a
Event_State	BACnetEventState	O ¹	n/a
Reliability	BACnetReliability	O ¹	n/a
Event_Detection_Enable	BOOLEAN	O ^{1,2}	n/a
Event_Enable	BACnetEventTransitionBits	O ^{1,2}	n/a
Acked_Transitions	BACnetEventTransitionBits	O ^{1,2}	n/a
Notify_Type	BACnetNotifyType	O ^{1,2}	n/a
Event_Time_Stamps	BACnetARRAY[3] of BACnetTimeStamp	O ^{1,2}	n/a
Event_Message_Texts	BACnetARRAY[3] of CharacterString	O ²	n/a
Event_Message_Texts_Config	BACnetARRAY[3] of CharacterString	O ²	n/a
Reliability_Evaluation_Inhibit	BOOLEAN	O ³	n/a
Tags	BACnetARRAY[N] of BACnetNameValue	O	n/a
Profile_Location	CharacterString	O	n/a
Profile_Name	CharacterString	O	n/a

1 These properties are required if the object supports intrinsic reporting.

2 These properties shall be present only if the object supports intrinsic reporting.

3 If this property is present, then the Reliability property shall be present.

*Recipient-List: max. 10 entries (can be changed from configuration tool)

Event Enrollment Object

Property Identifier	Property Datatype	Conformance Code Standard	Conformance Code SuperWISE2
Object_Identifier	BACnetObjectIdentifier	R	R
Object_Name	CharacterString	R	WP
Object_Type	BACnetObjectType	R	R
Description	CharacterString	O	WP
Event_Type	BACnetEventType	R	R
Notify_Type	BACnetNotifyType	R	WP
Event_Parameters	BACnetEventParameter	R	WP
Object_Property_Reference	BACnetDeviceObjectPropertyReference	R	WP
Event_State	BACnetEventState	R	R
Event_Enable	BACnetEventTransitionBits	R	WP
Acked_Transitions	BACnetEventTransitionBits	R	R
Notification_Class	Unsigned	R	WP
Event_Time_Stamps	BACnetARRAY[3] of BACnetTimeStamp	R	R
Event_Message_Texts	BACnetARRAY[3] of CharacterString	O	n/a
Event_Message_Texts_Config	BACnetARRAY[3] of CharacterString	O	n/a
Event_Detection_Enable	BOOLEAN	R	WP
Event_Algorithm_Inhibit_Ref	BACnetObjectPropertyReference	O	n/a
Event_Algorithm_Inhibit	BOOLEAN	O ²	n/a
Time_Delay_Normal	Unsigned	O	n/a
Status_Flags	BACnetStatusFlags	R	R
Reliability	BACnetReliability	R	R
Fault_Type	BACnetFaultType	O ³	n/a
Fault_Parameters	BACnetFaultParameter	O ³	n/a
Reliability_Evaluation_Inhibit	BOOLEAN	O	n/a
Property_List	BACnetARRAY[N] of BACnetPropertyIdentifier	R	R
Tags	BACnetARRAY[N] of BACnetNameValue	O	n/a
Profile_Location	CharacterString	O	n/a
Profile_Name	CharacterString	O	n/a

² Event_Algorithm_Inhibit shall be present if Event_Algorithm_Inhibit_Ref is present.

³ These properties are required if, and shall be present only if, the object supports fault algorithms other than NONE.

Schedule Object Type

Property Identifier	Property Datatype	Conformance Code Standard	Conformance Code SuperWISE2
Object_Identifier	BACnetObjectIdentifier	R	R
Object_Name	CharacterString	R	R
Object_Type	BACnetObjectType	R	R
Present_Value	Any	R	R
Description	CharacterString	O	R
Effective_Period	BACnetDateRange	R	WP
Weekly_Schedule	BACnetARRAY[7] of BACnetDailySchedule	O ¹	WP ⁴
Exception_Schedule	BACnetARRAY[N] of BACnetSpecialEvent	O ¹	WP ⁵
Schedule_Default	Any	R	WP
List_Of_Object_Property_References	BACnetLIST of BACnetDeviceObjectPropertyReference	R	WP*
Priority_For_Writing	Unsigned(1..16)	R	WP
Status_Flags	BACnetStatusFlags	R	R
Reliability	BACnetReliability	R	R
Out_Of_Service	BOOLEAN	R	W
Event_Detection_Enable	BOOLEAN	O ^{2,3}	n/a
Notification_Class	Unsigned	O ^{2,3}	n/a
Event_Enable	BACnetEventTransitionBits	O ^{2,3}	n/a
Event_State	BACnetEventState	O ^{2,3}	n/a
Acked_Transitions	BACnetEventTransitionBits	O ^{2,3}	n/a
Notify_Type	BACnetNotifyType	O ^{2,3}	n/a
Event_Time_Stamps	BACnetARRAY[3] of BACnetTimeStamp	O ^{2,3}	n/a
Event_Message_Texts	BACnetARRAY[3] of CharacterString	O ³	n/a
Event_Message_Texts_Config	BACnetARRAY[3] of CharacterString	O ³	n/a
Reliability_Evaluation_Inhibit	BOOLEAN	O	n/a
Property_List	BACnetARRAY[N] of BACnetPropertyIdentifier	R	R
Tags	BACnetARRAY[N] of BACnetNameValue	O	n/a
Profile_Location	CharacterString	O	n/a
Profile_Name	CharacterString	O	n/a

¹ At least one of these properties is required.

² These properties are required if the object supports intrinsic reporting.

³ These properties shall be present only if the object supports intrinsic reporting.

⁴ Weekly_Schedule: max. 10 Time-Values (can be changed from configuration tool) per day.

⁵ Exception_Schedule: max. 10 entries (can be changed from configuration tool) with 10 Time-Values (can be changed from configuration tool) each.

* List_Of_Object_Property_references: max. 10 entries (can be changed from configuration tool).

The value-range is a value between x-y, the time-range is from 00:00 to 23:59, where seconds and hundredths of seconds must be set to zero.

Trend Log Object Type

Property Identifier	Property Datatype	Conformance Code Standard	Conformance Code SuperWISE2
Object_Identifier	BACnetObjectIdentifier	R	R
Object_Name	CharacterString	R	WP
Object_Type	BACnetObjectType	R	R
Description	CharacterString	O	WP
Enable	BOOLEAN	W	WP
Start_Time	BACnetDateTime	O ^{1,2}	WP
Stop_Time	BACnetDateTime	O ^{1,2}	WP
Log_DeviceObjectProperty	BACnetDeviceObjectPropertyReference	O ⁸	WP
Log_Interval	Unsigned	O ^{1,3}	WP
COV_Resubscription_Interval	Unsigned	O	n/a
Client_COV_Increment	BACnetClientCOV	O	WP
Stop_When_Full	BOOLEAN	R	WP
Buffer_Size	Unsigned32	R	R
Log_Buffer	BACnetLIST of BACnetLogRecord	R	R
Record_Count	Unsigned32	W	W
Total_Record_Count	Unsigned32	R	R
Logging_Type	BACnetLoggingType	R	WP
Align_Intervals	BOOLEAN	O ⁵	n/a
Interval_Offset	Unsigned	O ⁵	n/a
Trigger	BOOLEAN	O	n/a
Status_Flags	BACnetStatusFlags	O	R
Reliability	BACnetReliability	O	n/a
Notification_Threshold	Unsigned32	O ^{4,7}	WP
Records_Since_Notification	Unsigned32	O ^{4,7}	R
Last_Notify_Record	Unsigned32	O ^{4,7}	R
Event_State	BACnetEventState	R	R
Notification_Class	Unsigned	O ^{4,7}	WP
Event_Enable	BACnetEventTransitionBits	O ^{4,7}	WP
Acked_Transitions	BACnetEventTransitionBits	O ^{4,7}	R
Notify_Type	BACnetNotifyType	O ^{4,7}	WP
Event_Time_Stamps	BACnetARRAY[3] of BACnetTimeStamp	O ^{4,7}	R
Event_Message_Texts	BACnetARRAY[3] of CharacterString	O ⁷	n/a
Event_Message_Texts_Config	BACnetARRAY[3] of CharacterString	O ⁷	n/a
Event_Detection_Enable	BOOLEAN	O ^{4,7}	WP
Event_Algorithm_Inhibit_Ref	BACnetObjectPropertyReference	O ⁷	n/a
Event_Algorithm_Inhibit	BOOLEAN	O ^{7,9}	n/a
Reliability_Evaluation_Inhibit	BOOLEAN	O ¹⁰	n/a
Property_List	BACnetARRAY[N] of BACnetPropertyIdentifier	R	R
Tags	BACnetARRAY[N] of BACnetNameValue	O	n/a
Profile_Location	CharacterString	O	n/a
Profile_Name	CharacterString	O	n/a

¹ These properties are required if the monitored property is a BACnet property.

² If present, these properties are required to be writable.

³ If present, this property is required to be writable when Logging_Type has the value POLLED or the value COV. Also, if present this property is required to be read-only if Logging_Type has the value TRIGGERED.

⁴ These properties are required if the object supports intrinsic reporting.

⁵ These properties are required if, and shall be present only if, the object supports clock-aligned logging.

⁶ Footnote removed.

⁷ These properties shall be present only if the object supports intrinsic reporting.

⁸ This property is required if, and shall be present only if, the monitored property is a BACnet property.

⁹ Event_Algorithm_Inhibit shall be present if Event_Algorithm_Inhibit_Ref is present.

¹⁰ If this property is present, then the Reliability property shall be present.

Structured View Object Type

Property Identifier	Property Datatype	Conformance Code Standard	Conformance Code SuperWISE2
Object_Identifier	BACnetObjectIdentifier	R	R
Object_Name	CharacterString	R	R
Object_Type	BACnetObjectType	R	R
Description	CharacterString	O	R
Node_Type	BACnetNodeType	R	R
Node_Subtype	CharacterString	O	R
Subordinate_List	BACnetARRAY[N] of BACnetDeviceObjectReference	R	R
Subordinate_Annotations	BACnetARRAY[N] of CharacterString	O	R
Property_List	BACnetARRAY[N] of BACnetPropertyIdentifier	R	R
Subordinate_Tags	BACnetARRAY[N] of BACnetNameValueCollection	O	n/a
Subordinate_Node_Types	BACnetARRAY[N] of BACnetNodeType	O	n/a
Subordinate_Relationships	BACnetARRAY[N] of BACnetRelationship	O	n/a
Default_Subordinate_Relationship	BACnetRelationship	O	n/a
Represents	BACnetDeviceObjectReference	O	n/a
Tags	BACnetARRAY[N] of BACnetNameValue	O	n/a
Profile_Location	CharacterString	O	n/a
Profile_Name	CharacterString	O	n/a

File Object Type

Property Identifier	Property Datatype	Conformance Code Standard	Conformance Code SuperWISE2
Object_Identifier	BACnetObjectIdentifier	R	R
Object_Name	CharacterString	R	R
Object_Type	BACnetObjectType	R	R
Description	CharacterString	O	R
File_Type	CharacterString	R	W
File_Size	Unsigned	R ¹	W
Modification_Date	BACnetDateTime	R	R
Archive	BOOLEAN	R	W
Read_Only	BOOLEAN	R	R
File_Access_Method	BACnetFileAccessMethod	R	R
Record_Count	Unsigned	O ²	n/a
Property_List	BACnetARRAY[N] of BACnetPropertyIdentifier	R	R
Tags	BACnetARRAY[N] of BACnetNameValu	O	n/a
Profile_Location	CharacterString	O	n/a
Profile_Name	CharacterString	O	n/a

1 If the file size can be changed by writing to the file, and File_Access_Method is STREAM_ACCESS, then this property shall be writable.

2 This property shall be present only if File_Access_Method is RECORD_ACCESS. If the number of records can be changed by writing to the file, then this property shall be writable.

Network Port Object Type

Property Identifier	Property Datatype	Conformance Code Standard	Conformance Code SuperWISE2
Object_Identifier	BACnetObjectIdentifier	R	R
Object_Name	CharacterString	R	W
Object_Type	BACnetObjectType	R	R
Description	CharacterString	O	W
Status_Flags	BACnetStatusFlags	R	R
Reliability	BACnetReliability	R	R
Out_Of_Service	BOOLEAN	R	R
Network_Type	BACnetNetworkType	R	R
Protocol_Level	BACnetProtocolLevel	R	R
Reference_Port	Unsigned	O	n/a
Network_Number	Unsigned16	R ¹	WP
Network_Number_Quality	BACnetNetworkNumberQuality	R	R
Changes_Pending	BOOLEAN	R	R
Command	BACnetNetworkPortCommand	O ²	n/a
MAC_Address	OCTET STRING	O ³	R
APDU_Length	Unsigned	R	R
Link_Speed	REAL	R	R
Link_Speeds	BACnetARRAY[N] of REAL	O ⁴	n/a
Link_Speed_Autonegotiate	BOOLEAN	O	n/a
Network_Interface_Name	CharacterString	O	n/a
BACnet_IP_Mode	BACnetIPMode	O ⁵	R*
IP_Address	OCTET STRING	O ⁶	R*
BACnet_IP_UDP_Port	Unsigned16	O ⁵	R*
IP_Subnet_Mask	OCTET STRING	O ⁶	R*
IP_Default_Gateway	OCTET STRING	O ⁶	R*
BACnet_IP_Multicast_Address	OCTET STRING	O ⁷	n/a
IP_DNS_Server	BACnetARRAY[N] of OCTET STRING	O ⁶	R*
IP_DHCP_Enable	BOOLEAN	O ⁸	n/a
IP_DHCP_Lease_Time	Unsigned	O	n/a
IP_DHCP_Lease_Time_Remaining	Unsigned	O	n/a
IP_DHCP_Server	OCTET STRING	O	n/a
BACnet_IP_NAT_Traversal	BOOLEAN	O ⁹	n/a
BACnet_IP_Global_Address	BACnetHostNPort	O ¹⁰	n/a
BBMD_Broadcast_Distribution_Table	BACnetLIST of BACnetBDTEntry	O ¹¹	WP*
BBMD_Accept_FD_Registrations	BOOLEAN	O ¹¹	WP*
BBMD_Foreign_Device_Table	BACnetLIST of BACnetFDTEEntry	O ¹²	R*
FD_BBMD_Address	BACnetHostNPort	O ¹³	WP*
FD_Subscription_Lifetime	Unsigned16	O ¹³	WP*
BACnet_IPv6_Mode	BACnetIPMode	O ¹⁴	n/a
IPv6_Address	OCTET STRING	O ¹⁵	n/a
IPv6_Prefix_Length	Unsigned8	O ¹⁵	n/a
BACnet_IPv6_UDP_Port	Unsigned16	O ¹⁴	n/a
IPv6_Default_Gateway	OCTET STRING	O ¹⁵	n/a
BACnet_IPv6_Multicast_Address	OCTET STRING	O ¹⁴	n/a
IPv6_DNS_Server	BACnetARRAY[N] of OCTET STRING	O ¹⁵	n/a
IPv6_Auto_Addressing_Enable	BOOLEAN	O ¹⁶	n/a
IPv6_DHCP_Lease_Time	Unsigned	O	n/a
IPv6_DHCP_Lease_Time_Remaining	Unsigned	O	n/a
IPv6_DHCP_Server	OCTET STRING	O	n/a
IPv6_Zone_Index	CharacterString	O ¹⁷	n/a
Max_Master	Unsigned8(0..127)	O ¹⁸	n/a
Max_Info_Frames	Unsigned8	O ¹⁸	n/a
Slave_Proxy_Enable	BOOLEAN	O ¹⁹	n/a

BACnet Protocol Implementation Conformance Statement

Manual_Slave_Address_Binding	BACnetLIST of BACnetAddressBinding	O ¹⁹	n/a
Auto_Slave_Discovery	BOOLEAN	O ²⁰	n/a
Slave_Address_Binding	BACnetLIST of BACnetAddressBinding	O ²¹	n/a
Virtual_MAC_Address_Table	BACnetLIST of BACnetVMACEntry	O ²²	n/a
Routing_Table	BACnetLIST of BACnetRouterEntry	O	n/a
Event_Detection_Enable	BOOLEAN	O ^{23,24}	n/a
Notification_Class	Unsigned	O ^{23,24}	n/a
Event_Enable	BACnetEventTransitionBits	O ^{23,24}	n/a
Acked_Transitions	BACnetEventTransitionBits	O ^{23,24}	n/a
Notify_Type	BACnetNotifyType	O ^{23,24}	n/a
Event_Time_Stamps	BACnetARRAY[3] of BACnetTimeStamp	O ^{23,24}	n/a
Event_Message_Texts	BACnetARRAY[3] of CharacterString	O ²⁴	n/a
Event_Message_Texts_Config	BACnetARRAY[3] of CharacterString	O ²⁴	n/a
Event_State	BACnetEventState	O ²³	n/a
Reliability_Evaluation_Inhibit	BOOLEAN	O	n/a
Property_List	BACnetARRAY[N] of BACnetPropertyIdentifier	R	R
Tags	BACnetARRAY[N] of BACnetNameValue	O	n/a
Profile_Location	CharacterString	O	n/a
Profile_Name	CharacterString	O	W

¹ Required to be writable in routers, secure devices, and any other device that requires knowledge of the network number for proper operation.

² Shall be present if, and only if, the object supports execution of any of the values of the Command property. If present, this property shall be writable.

³ Required if the port is not a PTP link. Read-only if the port is a BACnet/IP port or if the network represented by this object requires VMAC addressing.

⁴ Required if Link_Speed is writable.

⁵ Required to be present if the port is a BACnet/IP port.

⁶ Required if the port is a BACnet/IP port. If the BACnet_IP_DHCP property is TRUE, and this property is configured by DHCP, this property shall be read-only.

⁷ Required to be present if Network_Type is IPV4, Protocol_Level is BACNET_APPLICATION and the port supports multicast.

⁸ Shall be present if, and only if, Network_Type is IPV4 and the port can be configured by DHCP.

⁹ Required to be present if the Network_Type is IPV4, Protocol_Level is BACNET_APPLICATION, and the device is capable of communicating through a NAT router as described in Clause J.7.8.

¹⁰ Required if Network_Type is IPV4, Protocol_Level is BACNET_APPLICATION, and the device is configured to communicate through a NAT router as described in Clause J.7.8

¹¹ Required to be present if Network_Type is IPV4 or IPV6 and the device is capable of functioning as a BBMD.

¹² Required if Network_Type is IPV4 or IPV6 and the device is capable of functioning as a BBMD.

¹³ Required to be present if Network_Type is IPV4 or IPV6 and BACnet_IP_Mode or BACnet_IPv6_Mode respectively is set to FOREIGN.

¹⁴ Required to be present if Network_Type is IPV6 and Protocol_Level is BACNET_APPLICATION.

¹⁵ Required to be present if Network_Type is IPV6. Read-only if the value is configured by automatic address assignment.

¹⁶ Required to be present if Network_Type is IPV6 and the port supports automatic IPv6 address assignment.

¹⁷ Required to be present if Network_Type is IPV6 and the node supports multiple IPv6 link local addresses.

¹⁸ Required to be present and writable if Network_Type is MSTP, the device is an MS/TP master node, and the device supports the WriteProperty service.

¹⁹ Required to be present and writable if Network_Type is MSTP, and the device is capable of being a Slave-Proxy device.

²⁰ Required if Network_Type is MSTP, Protocol_Level is BACNET_APPLICATION, and the device is capable of being a Slave-Proxy device that implements automatic discovery of slaves.

²¹ Required if Network_Type is MSTP, Protocol_Level is BACNET_APPLICATION, and the device is capable of being a Slave-Proxy device.

²² Required if the network represented by this object requires VMAC addressing.

²³ These properties are required if the object supports intrinsic reporting.

²⁴ These properties shall be present only if the object supports intrinsic reporting.

* Parameter is present in B-BC profile only

Segmentation Capability:

- | | |
|---|------------------|
| <input checked="" type="checkbox"/> Able to transmit segmented messages | Window Size: 128 |
| <input checked="" type="checkbox"/> Able to receive segmented messages | Window Size: 128 |

Data Link Layer Options:

- ☒ BACnet IP, (Annex J)
- ☒ BACnet IP, (Annex J), BACnet Broadcast Management Device (BBMD)
- ☒ BACnet IP, (Annex J), Foreign Device
- ☐ ISO 8802-3, Ethernet (Clause 7)
- ☐ ANSI/ATA 878.1, 2.5 Mb. ARCNET (Clause 8)
- ☐ ANSI/ATA 878.1, RS-485 ARCNET (Clause 8), baud rate(s)
- ☐ MS/TP master (Clause 9), baud rate(s)
- ☐ MS/TP slave (Clause 9), baud rate(s)
- ☐ Point-To-Point, EIA 232 (Clause 10), baud rate(s)
- ☐ Point-To-Point, modem, (Clause 10), baud rate(s)
- ☐ LonTalk, (Clause 11), medium
- ☒ Other¹

¹ Support for Virtual NetworkType in virtual devices.

Device Address Binding:

Is static device binding supported? (This is currently necessary for two-way communication with MS/TP slaves and certain other devices.)

- ☒ Yes
- ☐ No

Networking Options:

- ☐ Router, Clause 6 - List all routing configurations, e.g., ARCNET-Ethernet, Ethernet-MS/TP, etc.
- ☐ Annex H, BACnet Tunneling Router over IP
- ☒ BACnet/IP Broadcast Management Device (BBMD)

Does the BBMD support registrations by Foreign Devices? ☒ Yes ☐ No

Character Sets Supported:

Indicating support for multiple character sets does not imply that they can all be supported simultaneously.

- | | | |
|---|---|-------------------------------------|
| <input checked="" type="checkbox"/> ISO 10646 (UTF-8) | <input type="checkbox"/> IBM™/Microsoft™ DBCS | <input type="checkbox"/> ISO 8859-1 |
| <input type="checkbox"/> ISO 10646 (UCS-2) | <input type="checkbox"/> ISO 10646 (UCS-4) | <input type="checkbox"/> JIS X 0208 |

Gateway Options:

This product is a communication gateway that supports below non-BACnet devices,

- ☒ WISE directors and radio devices

These devices are mapped as BACnet Analog, Binary and Multistate objects in Swegon SuperWISE BACnet gateway.
This product uses virtual BACnet devices.

Network Security Options:

Indicating support for multiple character sets does not imply that they can all be supported simultaneously.

- ☒ Non-secure Device - is capable of operating without BACnet Network Security
- ☐ Secure Device - is capable of using BACnet Network Security (NS-SD BIBB)
- ☐ Multiple Application-Specific Keys
- ☐ Supports encryption (NS-ED BIBB)
- ☐ Key Server (NS-KS BIBB)