

SuperWISE II

Communication unit to WISE



QUICK FACTS

- SuperWISE is the communication unit where all information is compiled to give a simple overview of the WISE system
- Loads and distributes the system's configuration file
- Possibility for connection via external communication protocol ModBus TCP, BACnet IP or API
- Updates software and synchronises functions throughout the whole WISE system without any downtime
- Possibility to connect to the Swegon INSIDE cloud to enable digital services

Technical description

SuperW^{ISE} is the communication unit where all information is compiled to give a simple overview of the WISE system via a web interface. It loads and distributes the system's configuration file. It updates software and synchronises functions throughout the whole WISE system while operational. There is also a possibility to connect an external communication protocol ModBus TCP, BACnet IP or API.

Design

The communication unit is available in 4 variants:

- SuperW^{ISE} II
- SuperW^{ISE} II IC (with INSIDE Connect)
- SuperW^{ISE} II 2K (for larger properties)
- SuperW^{ISE} II 2K IC (for larger properties, with INSIDE Connect)



*SuperW^{ISE} II,
SuperW^{ISE} II IC.*



*SuperW^{ISE} II 2K,
SuperW^{ISE} II 2K IC.*



*Figure 1. SuperW^{ISE} II, SuperW^{ISE} II IC.
NOTE! INSIDE Connect (2) only included in SuperW^{ISE} II IC.*



*Figure 2. SuperW^{ISE} II 2K, SuperW^{ISE} II 2K IC.
NOTE! INSIDE Connect (2) only included in SuperW^{ISE} II 2K IC.*

1. SuperW^{ISE} control unit - Main communication unit
2. INSIDE Connect – Router (only included in SuperW^{ISE} II IC/SuperW^{ISE} II 2K IC). Communicates on the mobile network. If the cabinet contains INSIDE Connect, the cabinet must be placed so that it can receive mobile signals. The cabinet can be supplemented with an extra antenna for increased signal strength for improved mobile coverage. See the separate documentation for INSIDE Connect on www.swegon.com
3. Switch - 8 ports (if more ports are required, install a supplementary switch outside of the cabinet)
 - Port 1: SuperW^{ISE} control unit
 - Port 2: INSIDE Connect
 - Port 3-8: Free for e.g. WISE DIR/AHU/BMS

4. Main switch - Connection of the power supply
5. Transformer
6. Earth connection

Functions

SuperWISE is the communication unit where all information, communications, control and calculations are compiled and presented in a web interface or via an external communication protocol.

Loading and distribution of the configuration file

An important function of SuperWISE is to load the system's configuration file and ensure that it is distributed to the entire system. In this way the functionality and setpoint values of the system's different products are assigned.

NOTE! Without a loaded configuration file the system will not start, but instead switches to default mode.

Updating the software

The system software can be updated on site by connecting a USB memory to SuperWISE or remotely via the web interface.

The update process is started via the web interface. The different software is sent out during operations where after the system automatically restarts. As the software is sent out during operations, and all units are updated from one and the same point, a complete software update takes up to seven hours.

Synchronisation of functions

All radio products check that they have the right configuration according to the configuration file during start up through communication with WISE DIR. If the unit's configuration corresponds with the one in WISE DIR the unit starts up. Otherwise the unit's configuration is synchronised with the one in WISE DIR. The product's LED flashes with a blue light when it awaits configuration, and lights with a fixed green light during normal operations.

Web interface

The SuperWISE web interface helps users to use, maintain and optimise their WISE-system. The interface and its different functions are described in the WISE User manual.

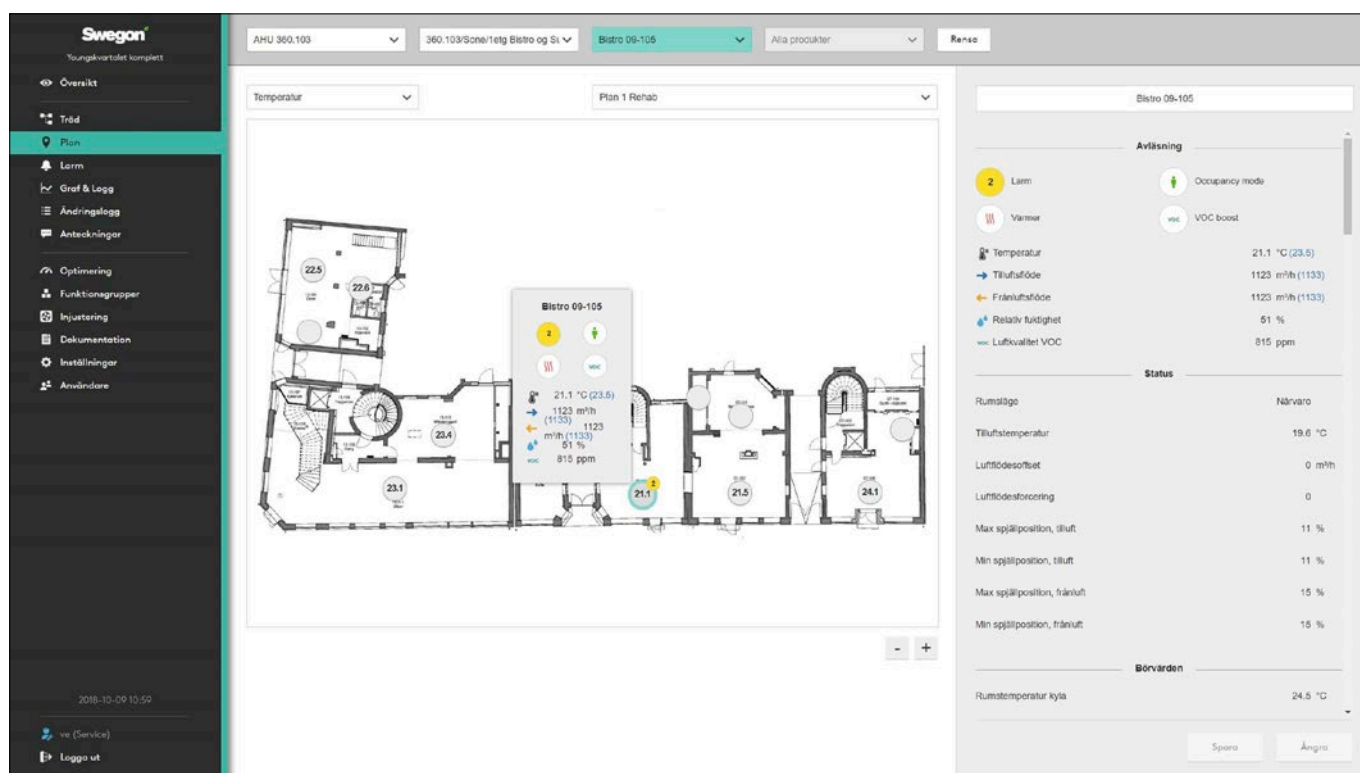


Figure 3. SuperWISE web interface.

Connection of the operating net to SuperWISE II / SuperWISE II IC

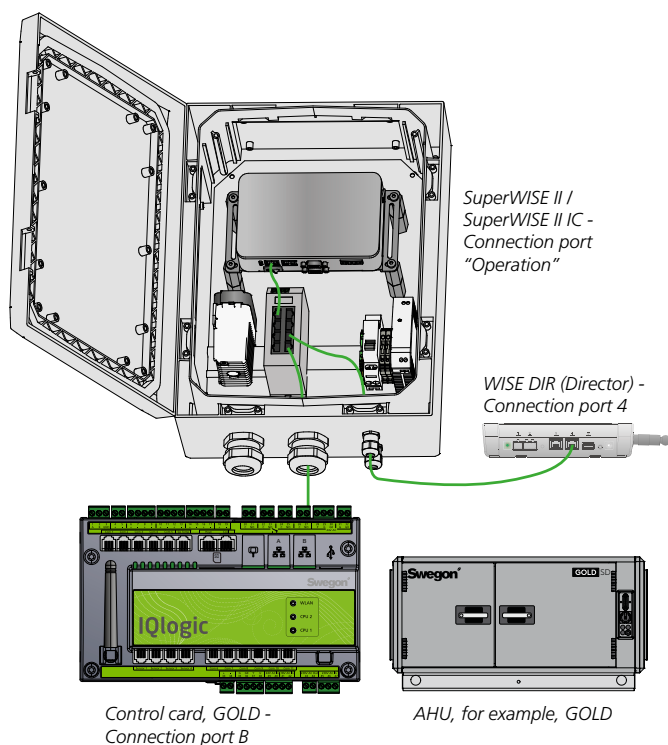


Figure 4. Connection of the operating net, SuperWISE II, SuperWISE II IC.

Connection of the operating net to SuperWISE II 2K / SuperWISE II 2K IC

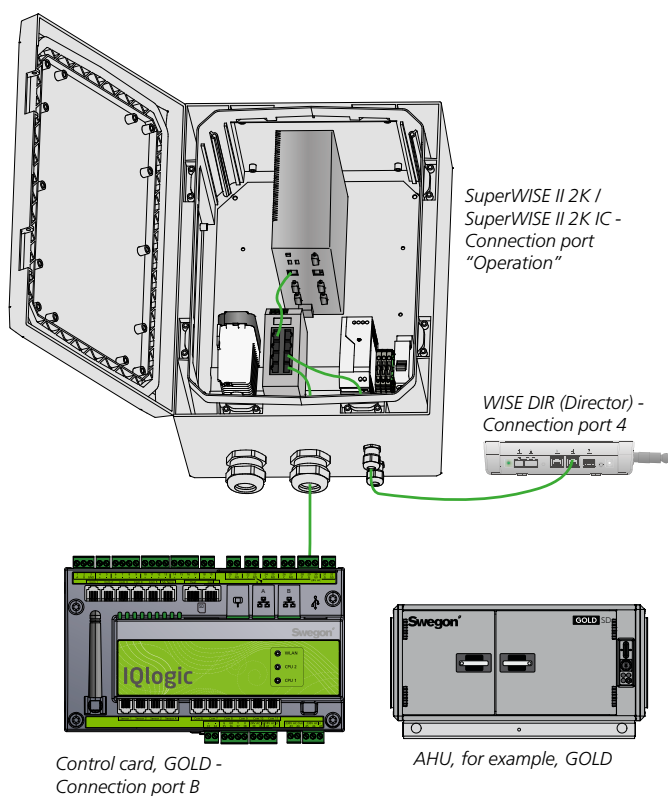


Figure 5. Connection of the operating net, SuperWISE II 2K, SuperWISE II 2K IC.

Materials and surface treatment

- The cabinet is made of polycarbonate (PC), colour code: RAL 7035 (Industrial grey).

Project planning

See the separate documentation "WISE System Guide", which is available for download via www.swegon.com.

Maintenance

The product does not require any maintenance/service, except for any cleaning when necessary. See the separate Instructions for Use, available on www.swegon.com.

Environment

The Building Materials Declaration is available from www.swegon.com.

Technical data

Output power (ERP) SuperWISE II IC/SuperWISE II 2K IC

External mobile network: Max. 2W (GSM mode)

Frequency band SuperWISE II IC/SuperWISE II 2K IC

External mobile network: 900/2100... MHz

USB: Type A

Switch/ Ethernet: Switch supports 3 (GOLD/AHU) + 3 outputs (WISE DIR)

IP class: IP44

Ambient temperature

Operation: -20 – +50°C

Storage: -40 – +80°C

RH: 10-95% non-condensing

CE marking: 2014/53/EU (RED)

2011/65/EU (RoHS2)

Electrical data

Power supply: 230V 10 A

Connections pipe dim.

Power terminals: Max. 2.5 mm²

Suitable cable diameter through the chassis (screw terminals): 5-10 mm

Max. power consumption

SuperWISE II: 34W

SuperWISE II IC: 34W

SuperWISE II 2K: 60W

SuperWISE II 2K IC: 60W

Installation, dimensions and weights

SuperWISE II, SuperWISE II IC

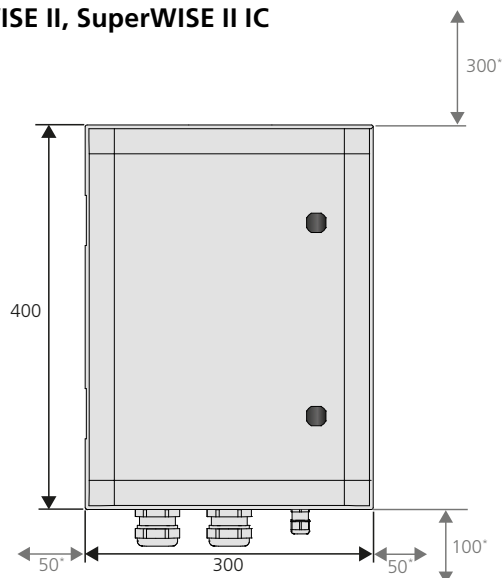


Figure 6. SuperWISE II, SuperWISE II IC, dimension figure (mm).
*Minimum free clearance to nearby installations.

SuperWISE II 2K, SuperWISE II 2K IC

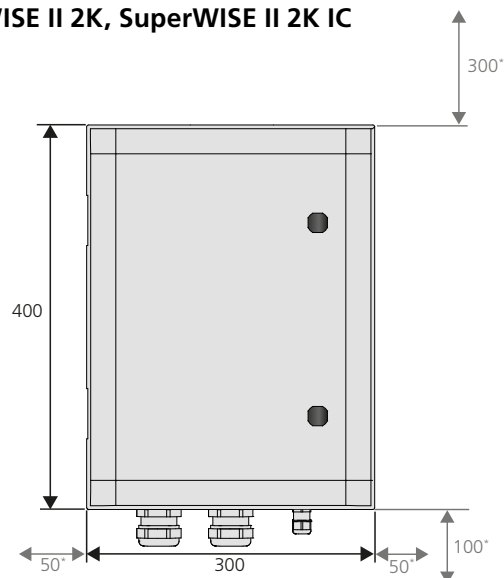


Figure 9. SuperWISE II 2K, SuperWISE II 2K IC, dimension figure (mm).
*Minimum free clearance to nearby installations.

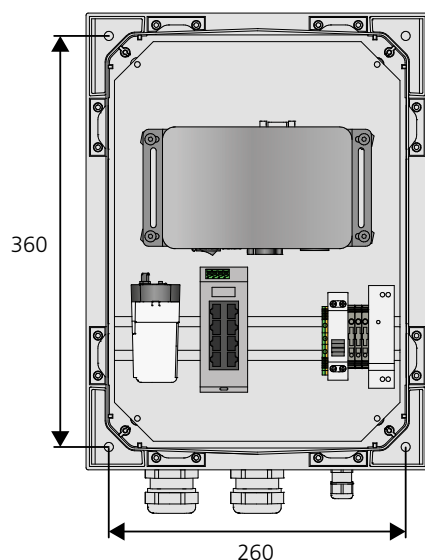


Figure 7. Holes for installation (mm), SuperWISE II, SuperWISE II IC. 4x installation screws (clearance hole $\varnothing = 8$ mm), screw selection based on the substrate.

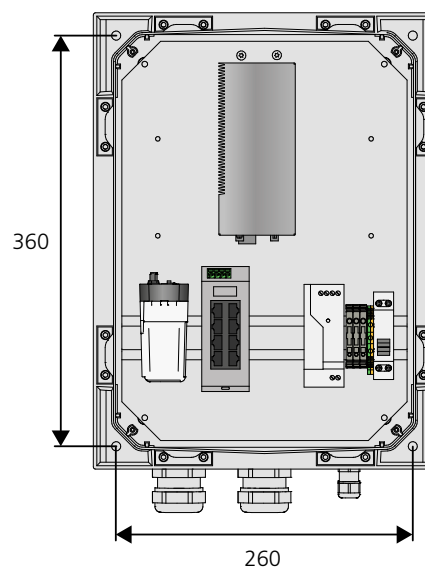


Figure 10. Holes for installation (mm), SuperWISE II 2K, SuperWISE II 2K IC. 4x installation screws (clearance hole $\varnothing = 8$ mm), screw selection based on the substrate.

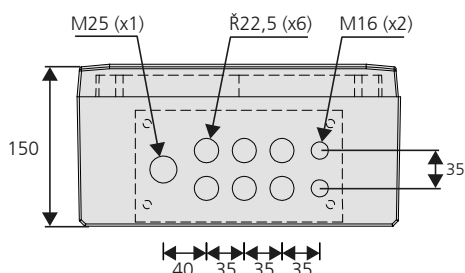


Figure 8. SuperWISE II, SuperWISE II IC underside, dimension figure (mm).

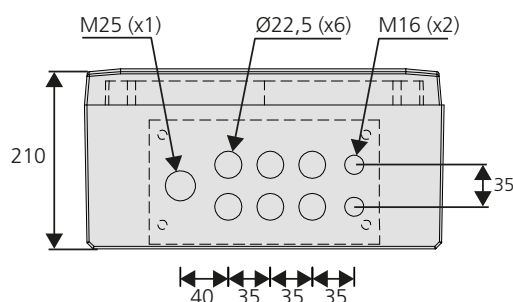


Figure 11. SuperWISE II 2K, SuperWISE II 2K IC underside, dimension figure (mm).

Weight (kg)	
SuperWISE II	5.8
SuperWISE II IC	6.3

Weight (kg)	
SuperWISE II 2K	7.1
SuperWISE II 2K IC	7.6

Ordering key

Product

Communication unit	SuperWISE II SuperWISE II 2K	bb	a
With INSIDE Connect: IC			
Version:			

Specification text

Communication unit for Swegon's system WISE, with the following functions:

- Available in four variants, depending on the property size and with or without INSIDE Connect.
- Compiled information to give a simple overview of the WISE system.
- Handling of the system's configuration file.
- Connection via external communication protocol.
- Program updates and synchronization of functions in the entire WISE system without downtime.
- Wireless communication in Swegon's demand controlled indoor climate system WISE.
- Adapted for mounting on wall.

Specification

Power supply:	230V 10 A	
IP class:	IP44	
Type:	SuperWISE II a	xx items
	SuperWISE II IC a	
	SuperWISE II 2K a	xx items
	SuperWISE II 2K IC a	